



Talking Circles

WCCC
Washington County Community Circles

"Repairing harm to victims, holding clients accountable and building a better community."

www.peacemakingcircles.org
Contact@peacemakingcircles.org

CALENDAR OF EVENTS

New Year, New Role?

March is a special time in a basketball family like mine. I recently read an article about [7 life lessons learned by basketball](#). The lessons are pretty spot-on, but one of them resonated with how I think about Circle, in particular:

***Never give up on the play. Persevere.** Another characteristic common to the brilliance of Larry, Magic and Michael was that they never gave up on a play. When they missed shots they would be the ones to retrieve their own rebounds, dive for loose balls, outwit defenders, and make every last second count (many times it did). They were willing to do the small things that the statistics didn't reflect. Many a dagger was thrust into an opponent's heart when the outcome of the game seemed a foregone conclusion. Why? Because they never gave up. Not on the play, not on the game, not on themselves! Lesson: Persevere. Never, ever, ever give up.*

Whether it is on our cases, seeking to ensure Circles in the organization live beyond the lives of our founders, or in our personal day-to-day struggles, I am inspired by how our volunteers and board members **never, ever, ever give up**.

Over the last few years our case referral numbers have fluctuated up and down (check out our most recent annual report [here](#)), but our volunteer base, volunteer hours, and revenue all increased in 2017. We're so fortunate to have volunteers and donors who have demonstrated that they won't give up on us, our clients, and our work. Keep reading to hear about our great volunteers and partners. And best of luck in your brackets...

Katie Schurrer
Chair of the WCCC Board



Upcoming Events

- March 1st
 - Gerten's Fundraising Spring Flower Sale Begins
- April 4th
 - Last day to order flowers for the Gerten's Fundraiser
- April 20th to 21st
 - Circle 101 Training
- May 9th
 - Gerten's Fundraising Spring Flower Sale Delivery

Volunteer Spotlight

WCCC often attracts individuals that are currently working in the justice system and are seeking another lens or additional way to contribute to our social justice system. Restorative justice through the circle process is such a great landing spot!

We want to introduce one such volunteer, Jessie Kimmin. Jessie attended University of Minnesota-Duluth (go Bulldogs!) and received a degree in Criminology and Psychology. She currently works as a Probation Office in Washington County.

Jessie has been volunteering for WCCC for the past four years. When asked what led her to start volunteering for WCCC, her response was insightful.

"I wanted to be more involved in the justice system, but on a different level. Often in Probation, it becomes an authority battle with the client. I found it appealing with circles, you really get to get to play more of a helper role.

In my experience, circles set a more positive atmosphere, as some people have a negative opinion of the criminal justice system. Circles seemed to take that aspect away. It becomes more of a neighborly conversation rather than an authority conversation."

During her four years of volunteering, Jessie feels her time with WCCC has naturally affected the way she performs as a professional in the criminal justice system by making her rethink the way she speaks and interacts with her clients in an office setting. She went on to say, "having the talking piece has forced me to really sit back and listen to what my clients have to say."

In her spare time, Jessie spends time with her husband (her college sweetheart) and runs after her two year old daughter. You can also find her outside enjoying nature or delving into new craft projects.



Volunteer Opportunities are always available through WCCC.

For more information or to learn how you can join a Circle, please contact us at contact@peacemakingcircles.org



Partners in (Repairing the harm of) Crime

In early January, WCCC conducted a Circle training and dialogue about partnership with about 20 local Tubman staff and legal advocates, prosecutors, and other nonprofit partners. Training evaluations demonstrated that 77% of respondents rated the training 5 out of 5 (5 being the highest rating).

Partners noted that it was valuable to *“be part of a circle,”* that they were *“inspired to think of ways that I can help,”* and that they *enjoyed learning about the process* and some of the outcomes of cases, including the [recidivism analysis](#).

Interested in learning more about Circles?

Invite us in to give a presentation to your organization! [Contact us](#).

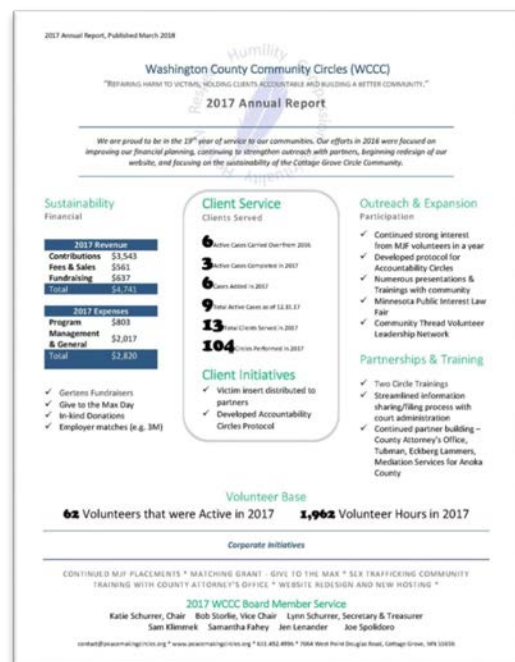
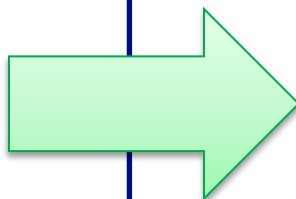
2017 Annual Report

Our 2017 Annual Report is now available!

We saw a decrease in case referrals and total cases handled, but our active volunteer numbers almost doubled from 37 to 62 in 2017.

Revenue also increased in 2017! Did we mention our [Gertens Fundraiser](#) is live? (nudge, nudge)

Please let us know if you have thoughts or comments on the Annual Report.



Gerten's Annual Flower Sale!

With spring right around the corner the thought of beautiful planters full of bright and vibrant colors definitely adds some warmth to the days.

As many of you know, each year we hold a fundraiser to help WCCC pay for operational expenses. This year marks our Ninth Annual Gerten's Fundraiser. We have started accepting orders for flowers and plants and all orders must be placed by April 4th. Flowers will be available for pickup in Roseville on May 9th.

In addition to selling flowers and plants, we will also be selling plant cards! The plant cards can be used to purchase plants (annuals, perennials, trees, shrubs, etc.) at Gerten's Inver Grove Heights location.

Online ordering is once again available this year.

The following website is accepting orders:

[WCCC Spring Flower Sale Order Form.](#)

We thank you in advance for your support of our fundraiser and Washington County Community Circles.

If you have any questions about ordering flowers, plants, or a plant card, please feel free to reach out to Jen Lenander at jen.lenander@peacemakingcircles.org.

phi·lan·thro·py

For it is in giving that we receive.

Send a check...



Washington County Community Circles
7064 S. West Point Douglas Rd.
Cottage Grove, MN 55016

Or Contribute via
www.givemn.org

